

# INSTALLATION INSTRUCTIONS

---



## MINI GAC<sup>®</sup> 2500 PCT

### (PRODUCT CALIBRATION TRANSFER PC TOOL)

DICKEY-john's PC Application Software tool provides a convenient method to load grain calibrations into the mini GAC 2500 unit via a computer.

**IMPORTANT: Grain calibration values vary based on region. Regions outside of North America should obtain calibrations from a local distributor.**

The mini GAC 2500 application software is compatible with Windows operating systems 7 and 10. A downloading error will occur if the software is attempted to download on a system other than the ones listed.

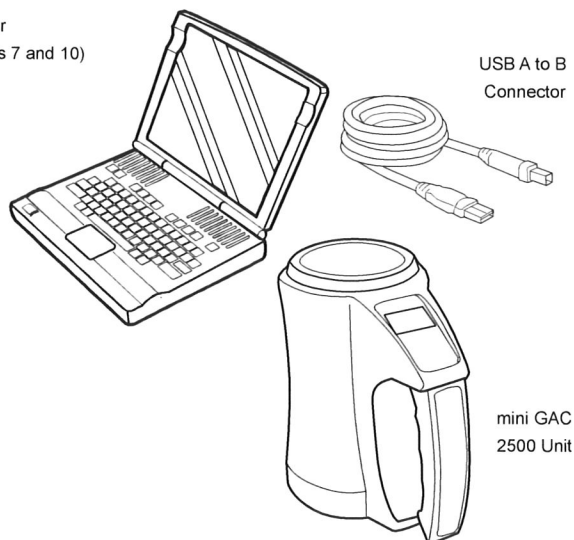
*Figure 1*

#### **Downloading Requirements**

---

Computer  
(Windows 7 and 10)

USB A to B  
Connector



mini GAC  
2500 Unit

# INSTALLATION INSTRUCTIONS



## PC SOFTWARE INSTALLATION

### To Install:

1. At the [www.dickey-john.com](http://www.dickey-john.com) home page, navigate to the mini GAC 2500 PC Application software by clicking on the following path:
  - Products
  - Analytical
  - Moisture Testing
  - mini GAC 2500
  - Get Support
  - Click 'Product Calibration Transfer Tool' to start download process
2. After download is complete, double click Disk1 to find the set up tool.
  - Double click the 'miniGAC2500\_PCT\_Setup' application
  - Depending on the browser, a pop-up screen will appear asking to extract all the files, continue to extract all
  - Disk1 will appear again, double click to open the file
  - Double click the 'miniGAC2500\_PCT\_Setup' to start the installation wizard.

### APPLICATION INSTALLATION WIZARD

3. Follow the wizard instructions to complete the software download.
4. If you choose "Run", the software file destination defaults to C:\Program Files (x86)\DICKEY-john\miniGAC2500\_PCT unless redirected to another file location during setup.

**Figure 2**

**Application Wizard Main Screen**



Desktop Icon



5. After a successful installation:
  - From the Start/Programs menu, click the **miniGAC2500\_PCT** Icon to start the PC application tool

# INSTALLATION INSTRUCTIONS



USB Symbol

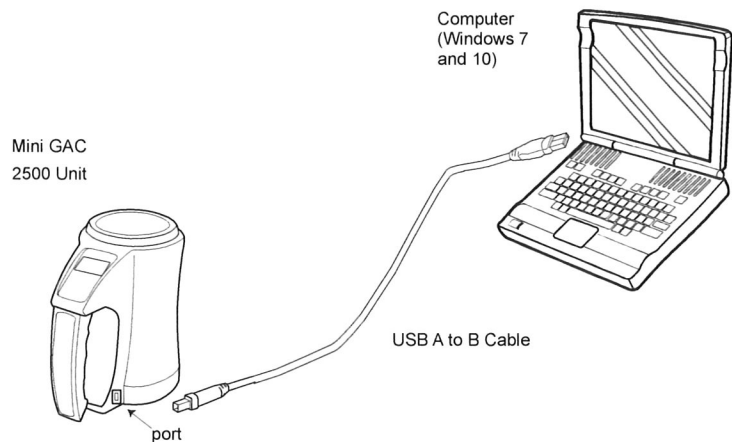
*NOTE: mini GAC 2500 functions are inoperable while connected to the PC Application Tool.*

## HARDWARE CONNECTION

To download grain calibrations from the computer to the mini GAC 2500, a USB cable is required.

1. Connect the USB cable to an available USB computer port.
2. Remove the dust protector from the mini GAC 2500 port located on the bottom of the unit near the handle. Connect the other end of the cable to mini GAC 2500 USB Port.
3. When properly connected, the USB symbol will appear on the mini GAC 2500 display. The mini GAC 2500 will power on when it is plugged in.
4. If the mini GAC 2500 unit is off, press the on/off button to power on.

**Figure 3**  
**USB Connections**



## GRAIN CALIBRATION FILES

The mini GAC 2500 is shipped with preset calibrations suitable for most grain calibrations. Customers who desire to measure moisture in other grains, nuts, and other crops should check the DICKEY-john website to determine if a calibration is available. Once found, customers should use the steps below to load the calibrations onto their mini GAC 2500.

*NOTE: Grain calibration values vary based on region. Regions outside of North America should obtain calibrations from a local distributor.*

1. At the [www.dickey-john.com](http://www.dickey-john.com) home page, click on the "**Moisture Testing**" link found at either Products -> Agricultural or Products -> Analytical section.
2. Click the mini GAC 2500 link.
3. Click the "Latest Grain Calibration Files" link.
4. Select "miniGAC2500" under the 'Instrument' selection.
5. Download the .CAL file.
  - note where the .CAL file is saved as it will need to be accessed later.

# INSTALLATION INSTRUCTIONS

---



## PC APPLICATION TOOL

The following functions are found on the main screen of the PC Application Tool.

### File

- Exits and closes the program

### Help

- Diagnostics - used by qualified service technicians for servicing the mini GAC 2500
- About - provides software version information

## MAIN SCREEN FUNCTIONS:

### Language

- A drop down list of languages that the mini GAC 2500 currently supports.

### Product

- A drop down list of products that the mini GAC 2500 currently supports.

### UPLOAD New Calibration

- Uploads the selected product grain calibration file to the mini GAC 2500.

### Delete Calibration

- Deletes the selected product from the mini GAC 2500.

### Refresh Product List

- Reads and displays all of the language and product information from the mini GAC 2500.

### Collapse Product List

- Collapses the view of the language and product information into a compact form. Click the little "+" symbol to the left of the language to view its product data.

# INSTALLATION INSTRUCTIONS



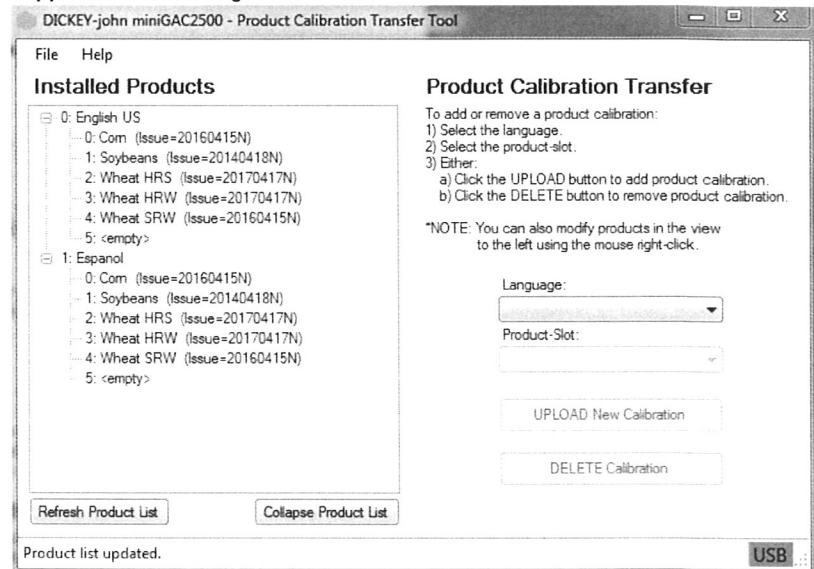
## USING THE PCT

**NOTE:** Reference the Troubleshooting section for possible download errors and resolution.

1. Open the mini GAC 2500 PC Application Tool file. The USB symbol must be displayed on the mini GAC 2500 unit for the communication between the PC and the unit to be active.
2. The Main PC Application page will display.

**Figure 4**

### PC Application Main Page



USB Symbol

3. Upon connecting the PC app to the mini GAC 2500, the language and product data will automatically be read from the mini GAC 2500 and displayed in the left window of the PC app. Refer to (Figure 4).
4. Use the Language drop down box to select the appropriate language. Then use the Product drop down box to select the appropriate grain to update or delete. Refer to (Figure 5).

**Figure 5**

### Product Field Entry

#### Product Calibration Transfer

- To add or remove a product calibration:
- 1) Select the language.
  - 2) Select the product-slot.
  - 3) Either:
    - a) Click the UPLOAD button to add product calibration.
    - b) Click the DELETE button to remove product calibration.

\*NOTE: You can also modify products in the view to the left using the mouse right-click.

Language:

Product-Slot:

UPLOAD New Calibration

DELETE Calibration

# INSTALLATION INSTRUCTIONS

---



*NOTE: Uploading new grain calibrations can only be done one at a time.*

5. To begin uploading a new grain calibration to the selected language and product-slot ("empty"), click the "UPLOAD New Calibration" button. The PCT will automatically navigate to the computer's download folder. Click "open". This will generate a warning box, click "Yes".
  - *It may be necessary to navigate to where the .CAL file has been stored.*
6. To remove a product calibration, select the desired language and product in the drop-down lists (or right-click the designed product in the Product view) and click the "DELETE Calibration" button.
7. A confirmation will display on the computer verifying a valid calibration upload or deletion.
8. To view the current calibrations stored in the mini GAC 2500, look on the left side of the PC Application Main Page. The calibrations list shown in the Installed Products window can be updated at any time by clicking the "Refresh Product List" button.
9. Close PCT and remove cable from computer. New calibrations can be found on product screen.

*NOTE: Language settings cannot be changed on the mini 2500 GAC unit using the PCT.*

## MOISTURE AND TEST WEIGHT BIAS

In situations where moisture and test weight differences occur with a local grain elevator, the Bias function allows for entering a correction factor in moisture and test weight to compensate for those differences.

This Bias adjustment can be done from the PCT software tool or from the mini GAC 2500.

To adjust Bias from the PCT Tool:

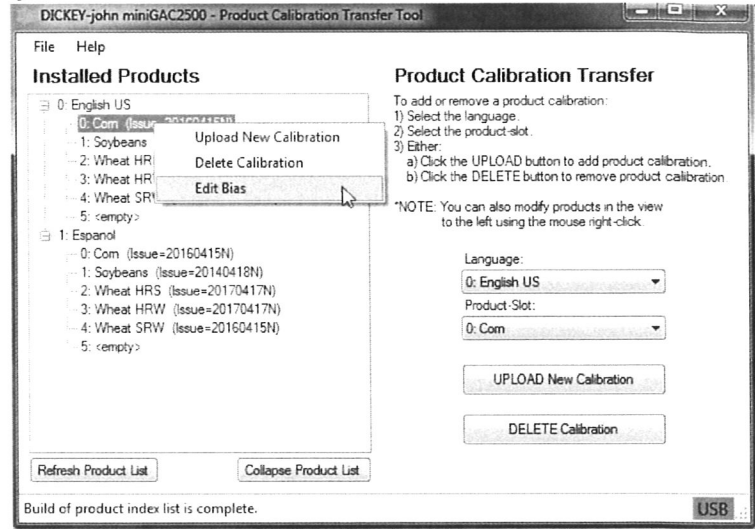
1. In the "Product List" on the left-side of the main window, right-click the desired product.
2. Select "Edit Bias" (Refer to Figure 6)
3. Allow time for the PCT tool to collect and display the bias data.
4. Enter new values and click the "Set Bias Values" button.
5. To re-verify the Bias values, click the "Get Bias Values" button to read them from the mini GAC 2500 device.

# INSTALLATION INSTRUCTIONS



Figure 6

## To Adjust Bias from the PCT Tool



## TROUBLESHOOTING

**NOTE:** For troubleshooting assistance, contact DICKEY-john Technical Support at 1-800-637-3302. Regions outside of the United States should contact a local distributor.

Issue	Probable Cause	Corrective Action
Error occurred during transfer	<ol style="list-style-type: none"> <li>1) Lost USB communication between mini GAC 2500 and computer.</li> <li>2) mini GAC 2500 battery is low or dead.</li> <li>3) mini GAC 2500 powered down automatically (auto power down turned off the mini GAC 2500).</li> <li>4) A USB communication error occurred between the computer and the miniGAC2500.</li> </ol>	<ol style="list-style-type: none"> <li>1) Ensure the USB cable is properly plugged into the computer USB port. Unplug and re-plug-in the USB cable into the mini GAC 2500 USB port. Verify the USB connection status in the PCT Application (lower right corner of window should have a green USB indicator).</li> <li>2) Replace the 9V battery with an approved lithium battery.</li> <li>3) Power on the mini GAC 2500.</li> <li>4) Retry the product calibration transfer.</li> </ol>
Device not connected	<ol style="list-style-type: none"> <li>1) Lost USB communication between mini GAC 2500 and computer.</li> <li>2) mini GAC 2500 powered down automatically (auto power down turned off the mini GAC 2500).</li> </ol>	<ol style="list-style-type: none"> <li>1) Ensure the USB cable is properly plugged into the computer USB port. Unplug and re-plug-in the USB cable into the mini GAC 2500 USB port. Verify the USB connection status in the PCT Application (lower right corner of window should have a green USB indicator).</li> <li>2) Power on the mini GAC 2500.</li> </ol>
Invalid calibration file type error	<ol style="list-style-type: none"> <li>1) A product calibration file designed for a device OTHER than the mini GAC 2500 was used.</li> <li>2) The product calibration file is corrupted.</li> </ol>	<ol style="list-style-type: none"> <li>1) Ensure that a product calibration file dedicated for the mini GAC 2500 is used.</li> <li>2) Re-download the product calibration file.</li> </ol>
Error-28 displayed on mini GAC 2500	There are no product calibrations loaded onto the mini GAC 2500.	Using the PCT Application, ensure that all languages on the mini GAC 2500 have at least one product assigned to them.

# INSTALLATION INSTRUCTIONS

---

